

2019



# POSITIONING OUR TEAM TO SOAR

**A Collaborative Inquiry pathway  
in the spirit of Excellence at  
Manurewa West Primary School**



# What is our story?



## *Our Vision*

*To...*

*Promote exciting, challenging child-centred programmes*

*Ensure learning achievement and success for all*

*Value each other's identity, culture, and personal development*

*Have staff who are professionally committed to high quality teaching applications*

*Foster a positive relationship between school and home, in a safe, physical and emotional environment*

## *Our Motto*

*Wisdom Through Understanding*

## *Our Mission*

*Through excellence in teaching and learning, we will make a better tomorrow for our children today"*

## *Our Values*

*Respect, Responsibility, Self-Discipline, Honesty and Pride*

*The School Logo Story*

*Our Pepeha- what is your/students' story*



# *Where have we come from?*



- ❖ Change in Leadership - transformation
- ❖ We are a proud school and a very successful school, recognised by local, national, and international educational acknowledgements. We have high professional standards and firm and clear school expectations for all.
- ❖ A school culture of working together, with drive and vision to achieve our goals.
- ❖ We have a platform for professional growth and fulfilment of meeting teaching standards competently.
- ❖ The Manurewa West Way – high expectations and excellence for all
- ❖ Diversity is our strength



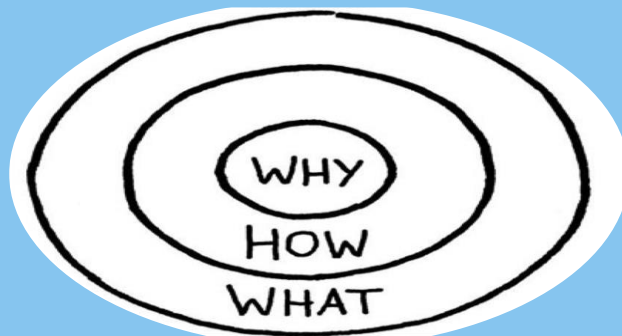
# Where are we going as a school?



<https://www.youtube.com/watch?v=ByqyU7FK5tc>

## What are our goals/direction?

Our responsibility is that every student has a right to high quality education and to be successful. We all must be part of that really.



- “Collaborative Practice is the vehicle of continual improvement”
- Li Kai Chen
- “How the World's Most improved School Systems keep getting better”
- McKinsey & Co 2010



# Key Drivers for 2019

*Whanau and Community  
Engagement*

**WHANAUNGATANGA**

*Embedded Culture of  
Collaborative Inquiry*

**WĀNANGA**



*Strong Effective  
Leadership*

**MANAAKITANGA**

*Innovative Integrated  
School Curriculum*

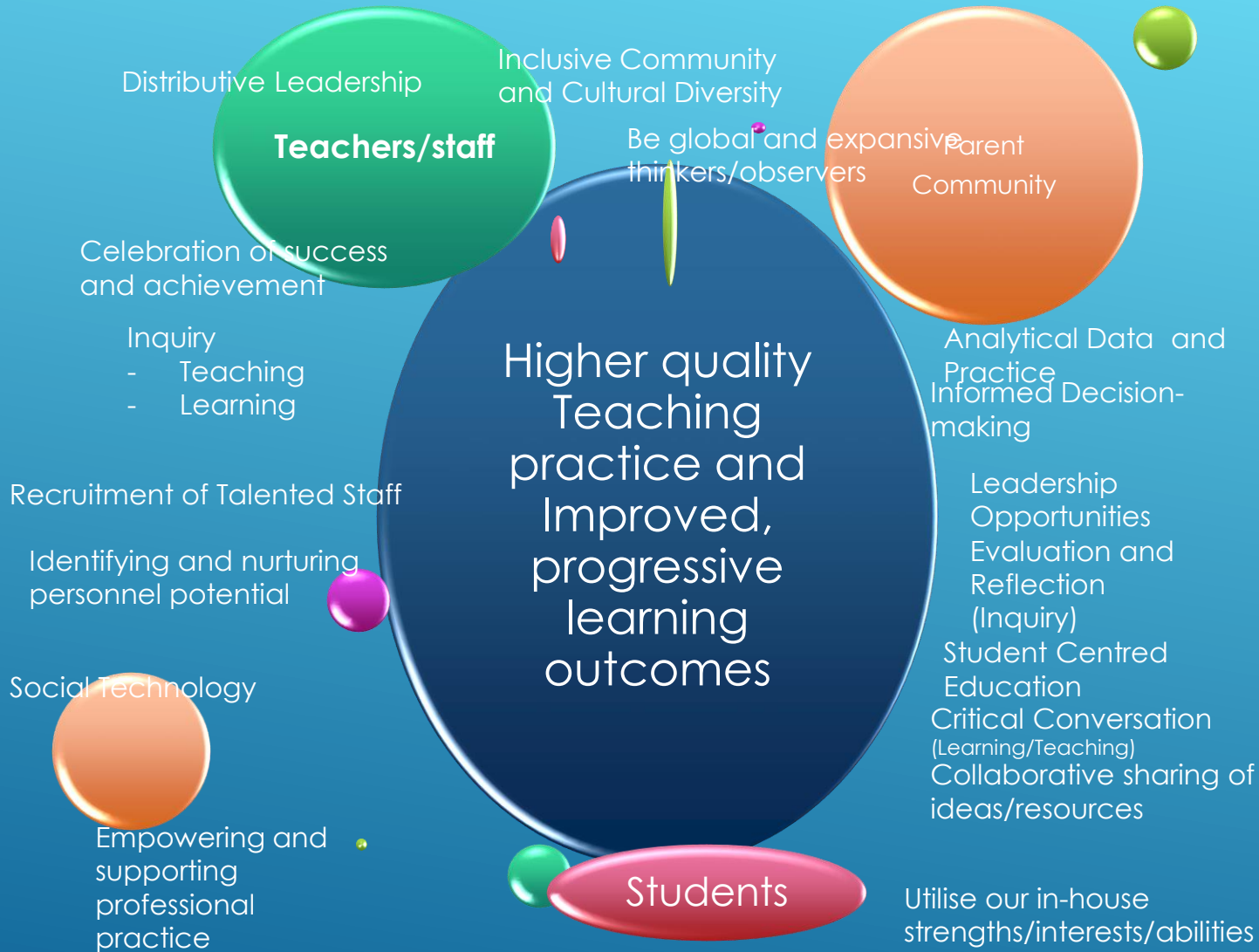
**AKO, WĀNANGA**

*Cultural Diversity  
and Inclusion*

**PONO**

# MWPS Strategic Goals 2019





A MORE EFFICIENT WORKPLACE IS MORE DESIRABLE WHEN WE ARE ABOUT:

"The Manurewa West Way"



# Keep Our Focus





**Consistent message** from the teacher and the whole school, that students will succeed, based upon genuine respect for students and belief in student capability.

# 2019 Key Initiatives

## Maths

- Problem Solving
- Mixed ability Groups
  - Alim
- Year 2 Whole School PD
- Extension Groups
- Learning Assistant support

New Build Project  
Growth Mindset  
Innovative Learning  
Spaces

## Literacy

- BBL
- Talk to Learn
- ALL-Writing
- Lego Writing Y3/4
- Writing Extension

## Digital Technologies

- New DT Vision & Implementation of Curriculum
- Coding – Y1-6 use scratch app
- Coding/Robotics Y5/6

- ## Sports and PE
- School Sports Coach
  - Extension Sports programme
  - Student Leadership development
  - PE PD/teaching

Collaborative Inquiry  
Spiral Inquiry

Bi-Cultural Programmes Maori and Samoan

Te Reo lessons for all classes and PD for all staff  
Kapa Haka  
Pasifika Groups  
Maori Achievement Plan  
Pasifika Achievement Plan

Sustainability-Enviro Gardening  
Scientific Inquiry

*Nā tō rourou,  
nā taku rourou  
ka ora ai te iwi*

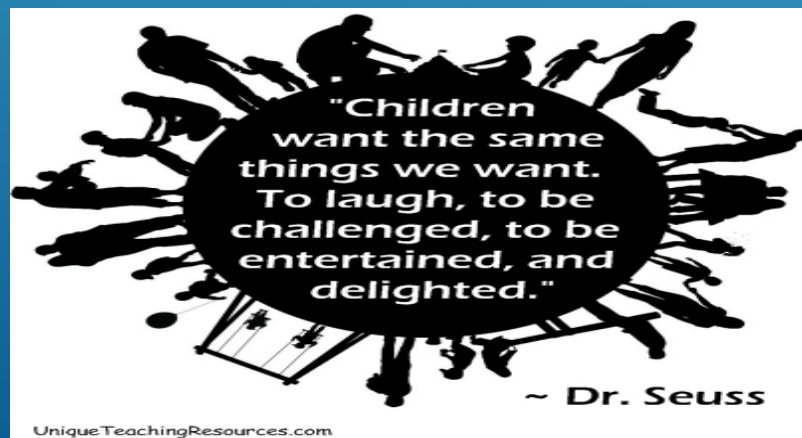
MAORI WHAKATAUKI  
WE ARE A TEAM WORKING TOGETHER SO  
THAT EVERYONE WILL BENEFIT

*With your food basket  
and my food basket  
the people will thrive*





[https://www.ted.com/talks/rita\\_pierson\\_every\\_kid\\_needs\\_a\\_champion](https://www.ted.com/talks/rita_pierson_every_kid_needs_a_champion)



*Best wishes for an exciting, productive and fulfilling year at MWPS*

*Kogie Naidoo  
Principal Jan 2019*